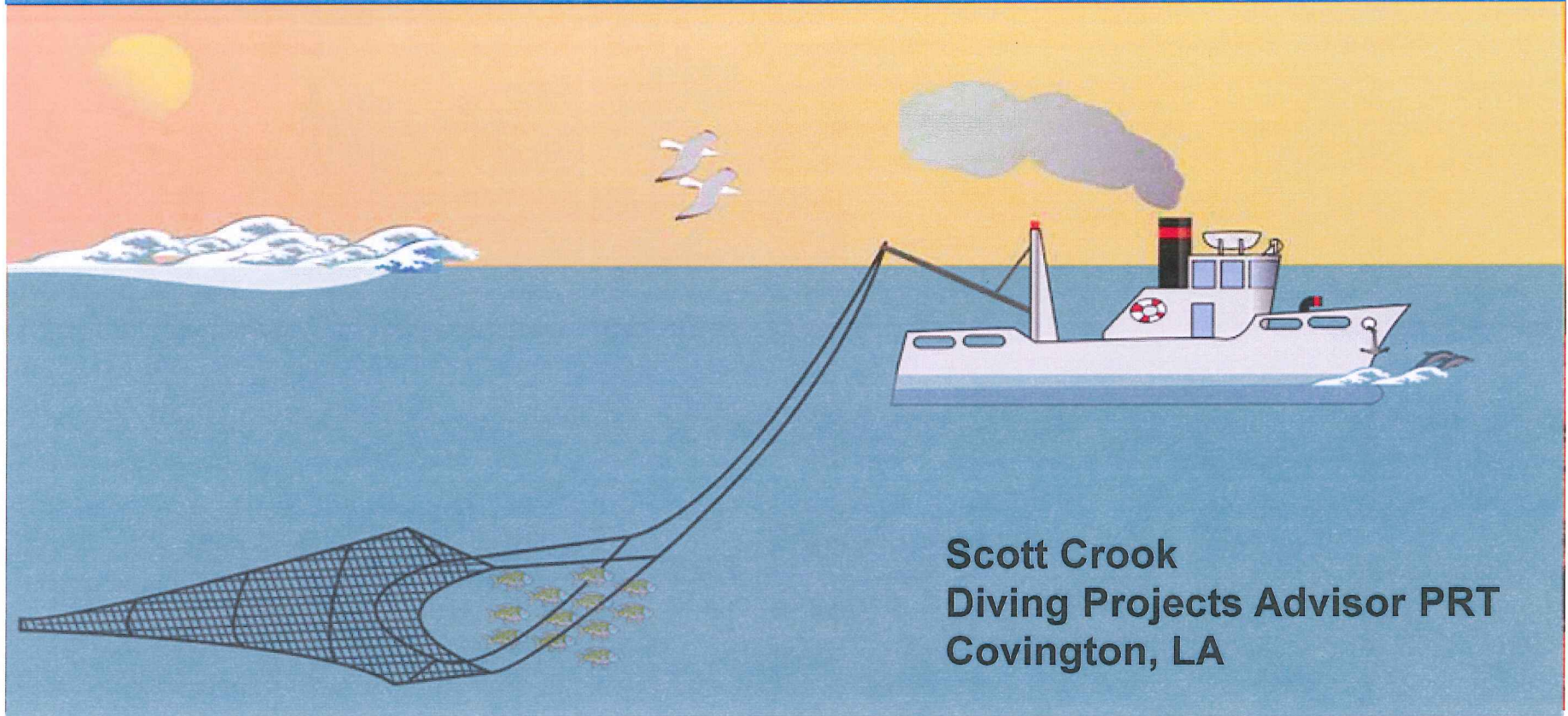


# Vessel Encroachment



**Scott Crook**  
**Diving Projects Advisor PRT**  
**Covington, LA**



# Vessel Encroachments

For the purpose of this presentation Vessel Encroachment will be defined as:

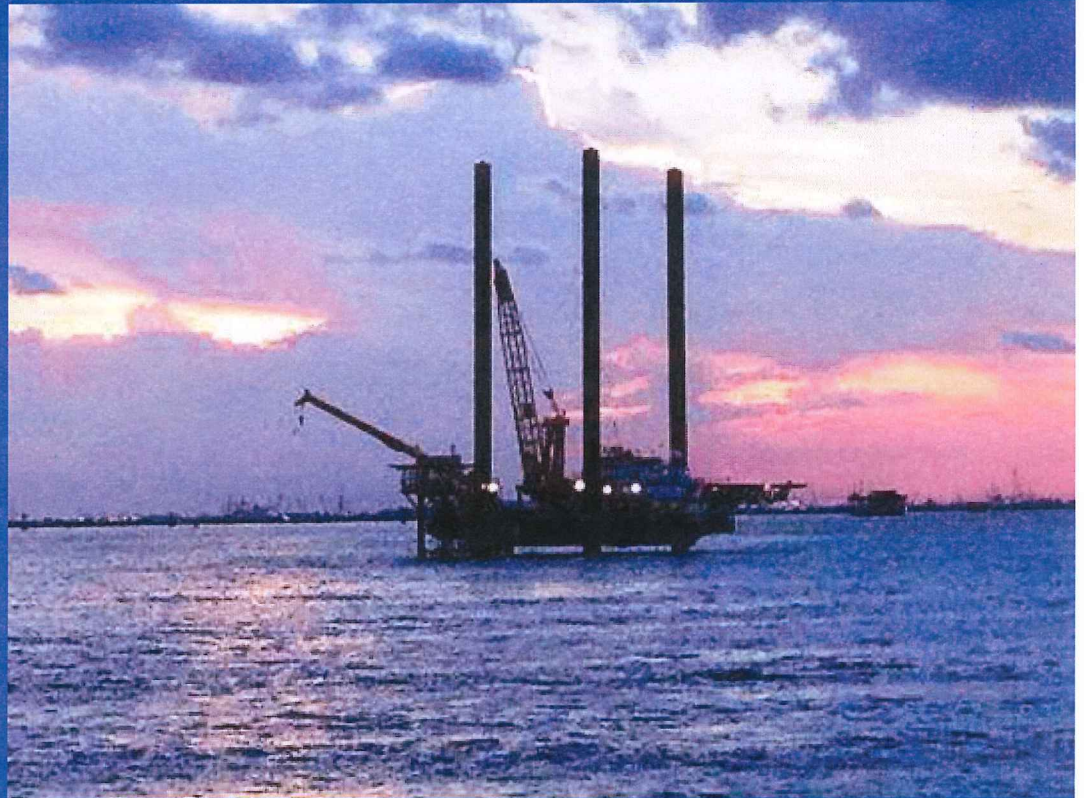
An unapproved vessel entering into the 1/2 mile CPA (Closest Point of Approach) that is established by a vessel conducting diving operations





# Vessel Encroachment Topics

- The Law
- Potential Hazards of Encroachments
- Encroachment Incidents
- Encroachment Prevention
- Frequency of Encroachments
- Encroachment Reporting





# Vessel Encroachments: The Law: What does the Diver Down Flag mean?

## The Law and the confusion:

- 1/2 mile = 2,640
- 1/2 nautical mile = 3,039'
- LA State = 100' (LDWF)
- MS State = 300' (MDWFP)
- AL State = 100' (ALEAMPD)
- TX State = 50' or 150' depending upon your speed. (TPWWSA)
- Florida = 100' rivers, 300' Open water (FFWCC)

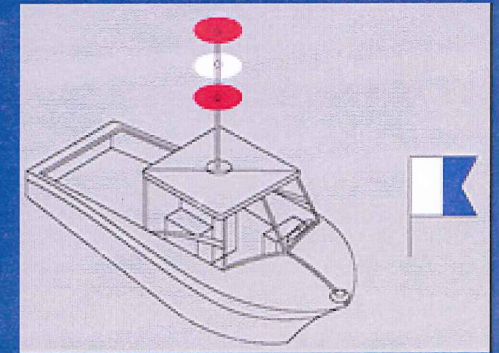




# Vessel Encroachment: Hazards

## In Shallow Depths (30' <)

- Diver Struck by.....
- Diver umbilical, search line or buoy snagged and pulled into propellers
- Diver snagged by trawl vessel
- DSV , Barge, or Anchor wire Struck by....



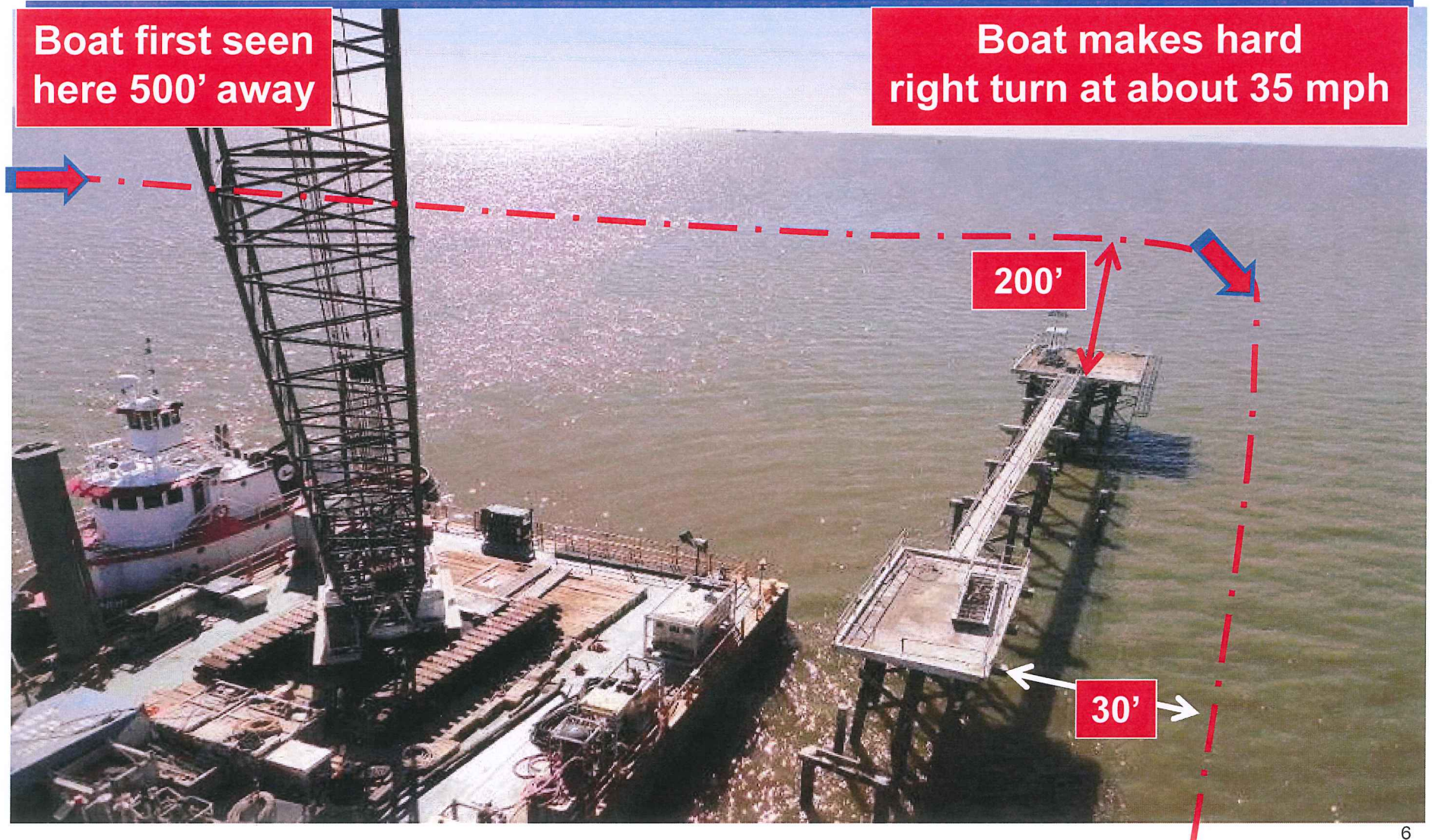
## In Depths Greater than 30'

- All of the above minus Diver Struck by and Umbilical snagged.

Note: Hazards above are general and not an exhaustive list



# Vessel Encroachments: Incidents

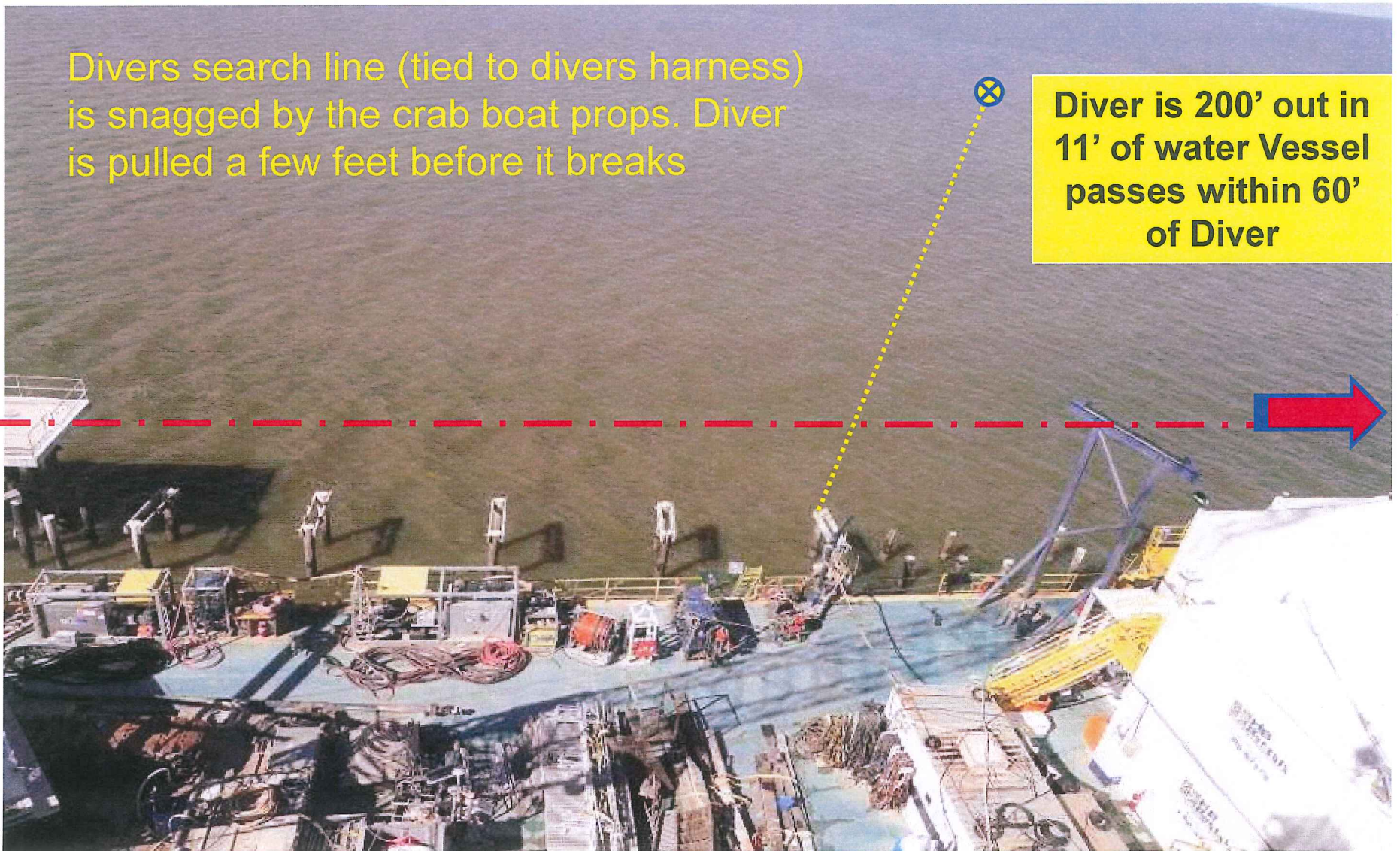




# Vessel Encroachments: Incidents

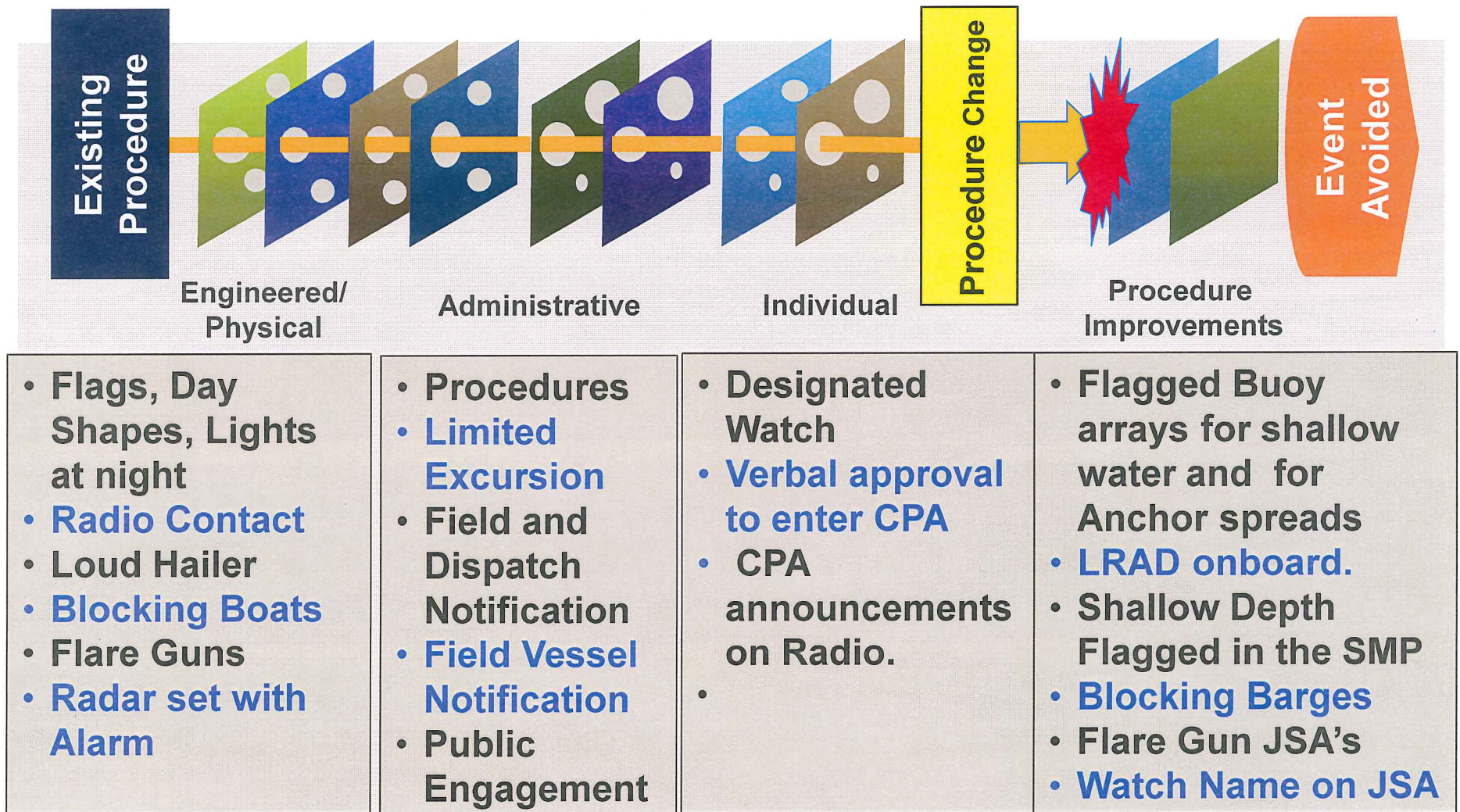
Divers search line (tied to divers harness) is snagged by the crab boat props. Diver is pulled a few feet before it breaks

**Diver is 200' out in 11' of water Vessel passes within 60' of Diver**





# Encroachment Prevention: Consider a Barrier Model for your Encroachment Procedures





# Vessel Encroachment: Frequency

We have had 70 recorded Encroachments since tracking began in 2010

In 2014 we had 9 encroachments in one day on the same vessel

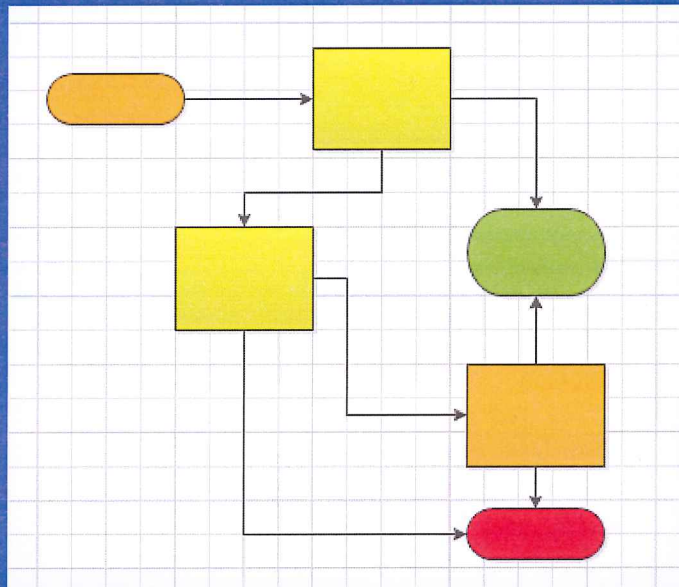
- After entering all these near miss incidents into our incident data base we determined that we needed a better definition of what actually poses a threat to the diver or the vessel.





# Vessel Encroachment: Reporting

The results of that discussion led to the creation of a Flow Chart to determine if the Near Miss was reportable as an Incident.



Flow chart For Illustration only





# Questions?

